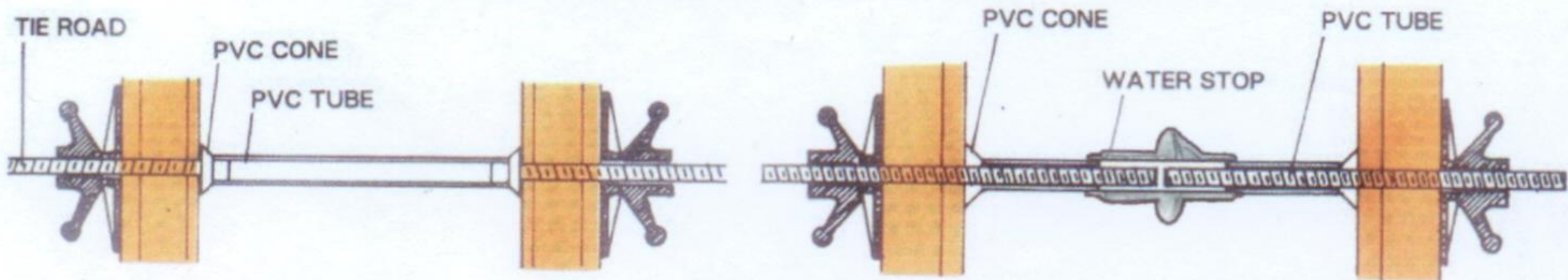


Tie System



TIEING POSSIBILITIES



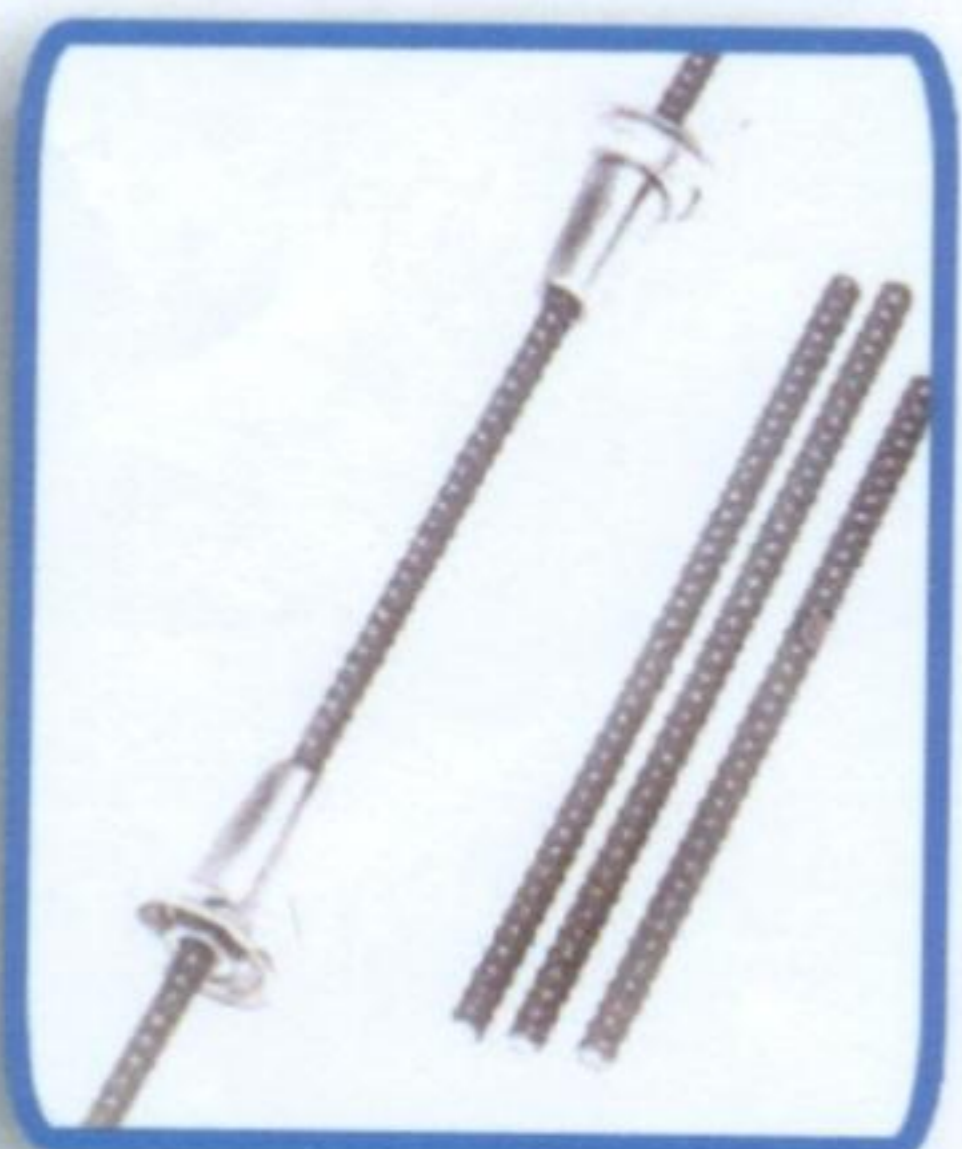
WING NUT

This wing nut is used in conjunction with all tie plates without thread. The wings on the nut ensures practical advantages in handling.



WATER BARRIER

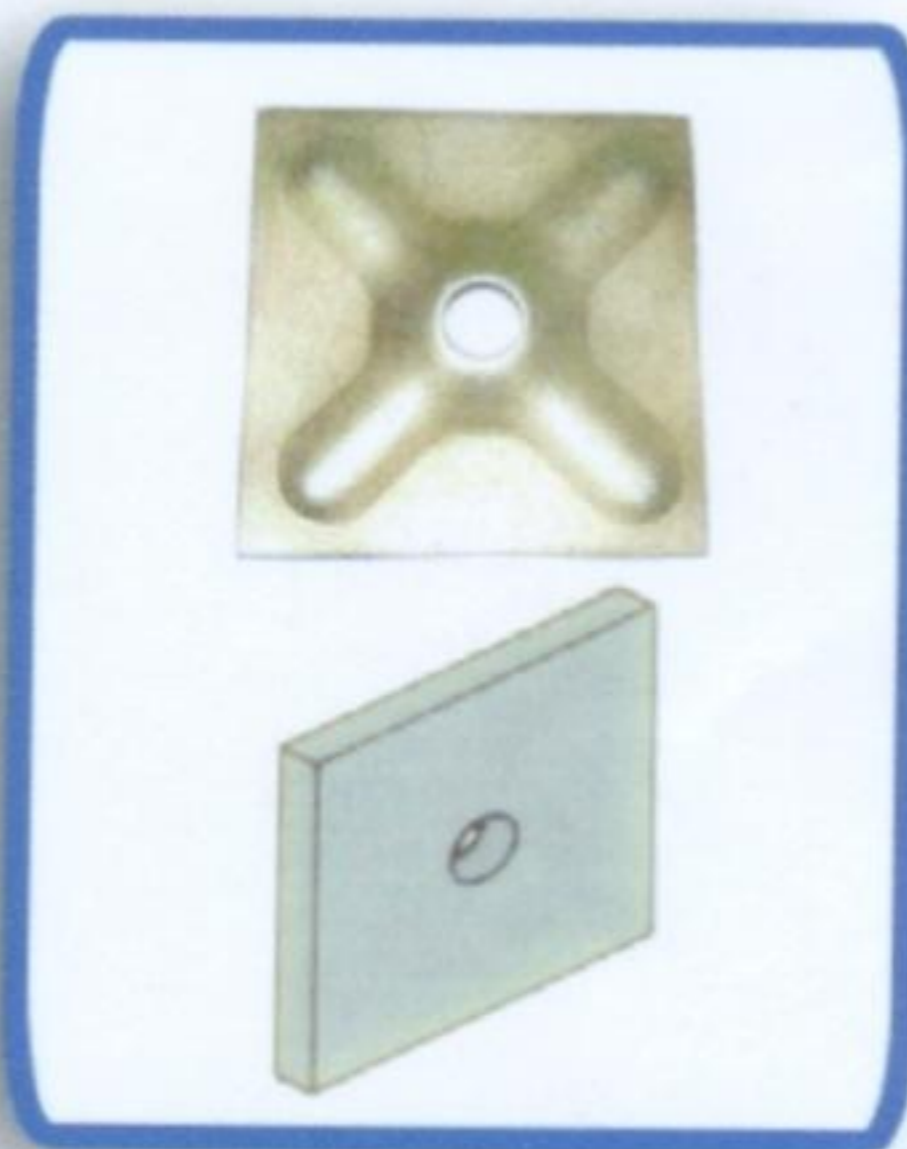
When watertight concrete walls have to be constructed. It is very often the case that the principals demand that the tie is connected up to a so called waterstop in the middle of the wall.



TIE ROD

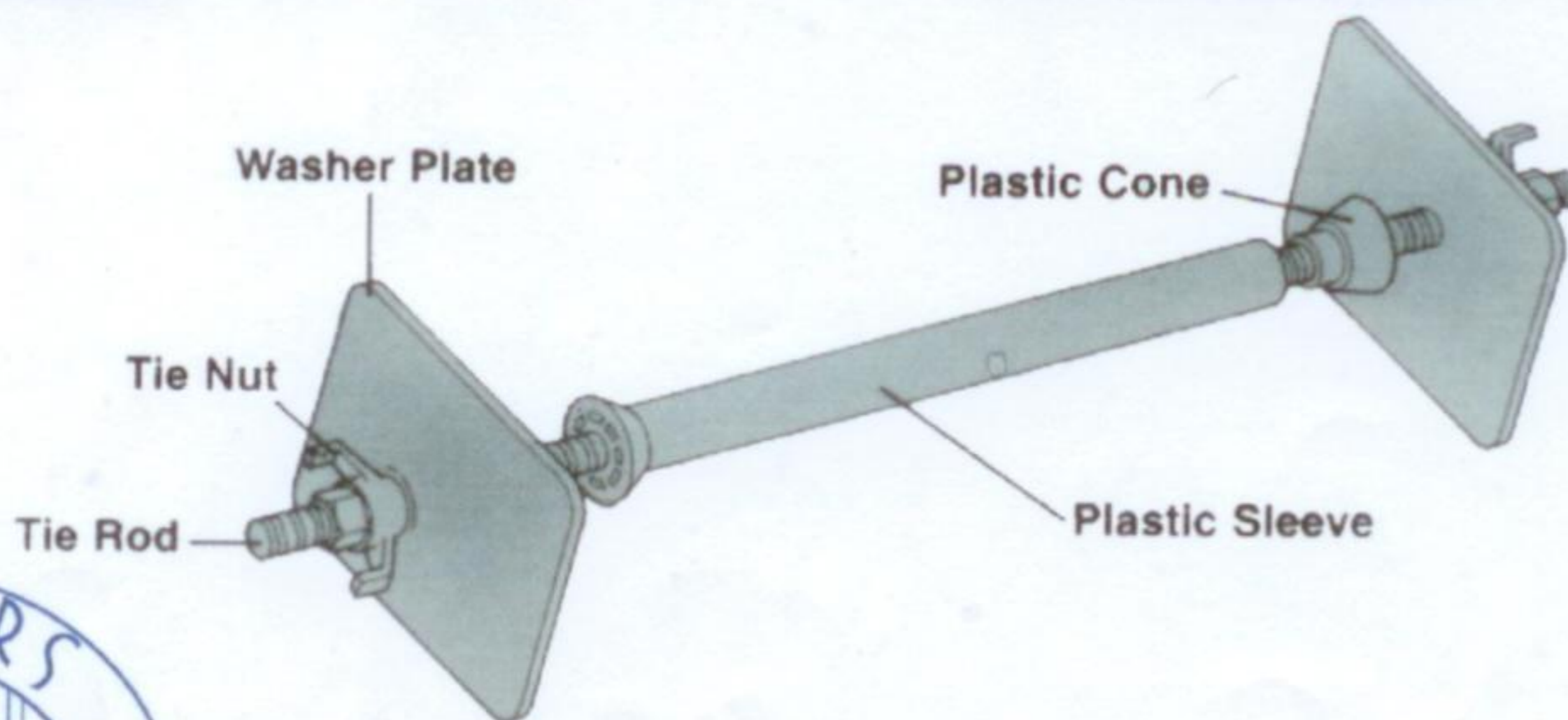
This tie rods are comprised of a top quality high tensile steel with continuous robust, rolled on thread where variations of length of ties is required, 6m. Length threaded bar is available to cut required size.

Note:
Max. Tie Load = 70 KN



WASHER PLATE

This rigid base plate without thread should be used in conjunction with a tie nut or wing nut.



PIONEERS
SCAFFOLDING & FORMWORK CO.

www.pioneerspsf.com

Specialist in supplying Scaffolding & Formwork